

77 Braemar Road, Sutton Coldfield, West Midlands, B73 6LZ.
5552

Tel. 0121 354

E-mail: tc@msc.tc

Directors

J.C.Cooper T.F.Cooper



AC Mains Panel (size 156mmx198mm).

The AC panel is intended as a matching unit to our DC panel but will function as a stand-alone unit if desired. It features two warning lights, one to indicate power available, and the second one to confirm that it is of the correct polarity. It is supplied with a loom and a DIN rail mounted connector block. Protection takes the form of an RCD with a choice of 16A or 40A current rating, and three separate thermal trips to provide a more controlled distribution of power. As standard, one 15A one 10A and one 5A are provided but these can be changed to order. A legend sheet with a selection of relevant labels is supplied.

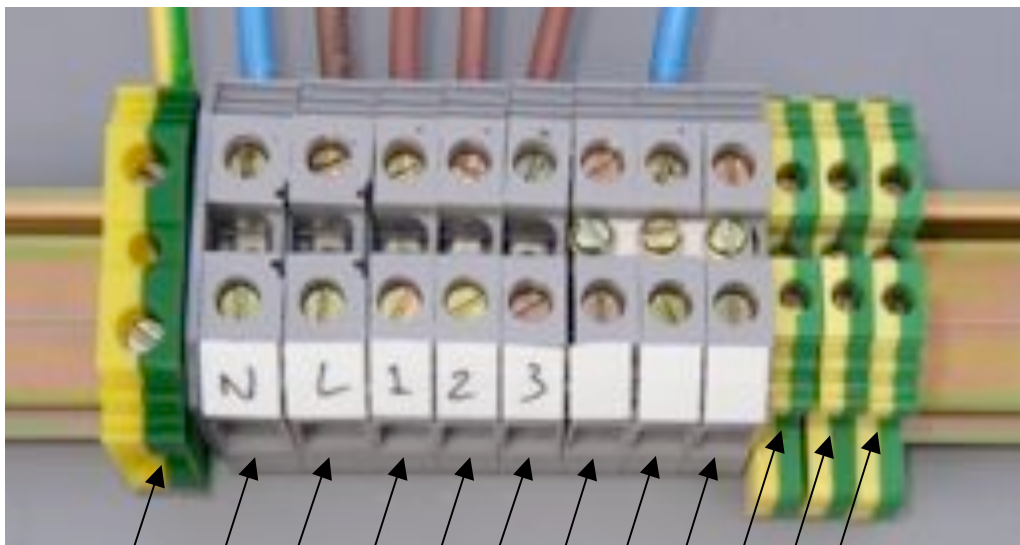
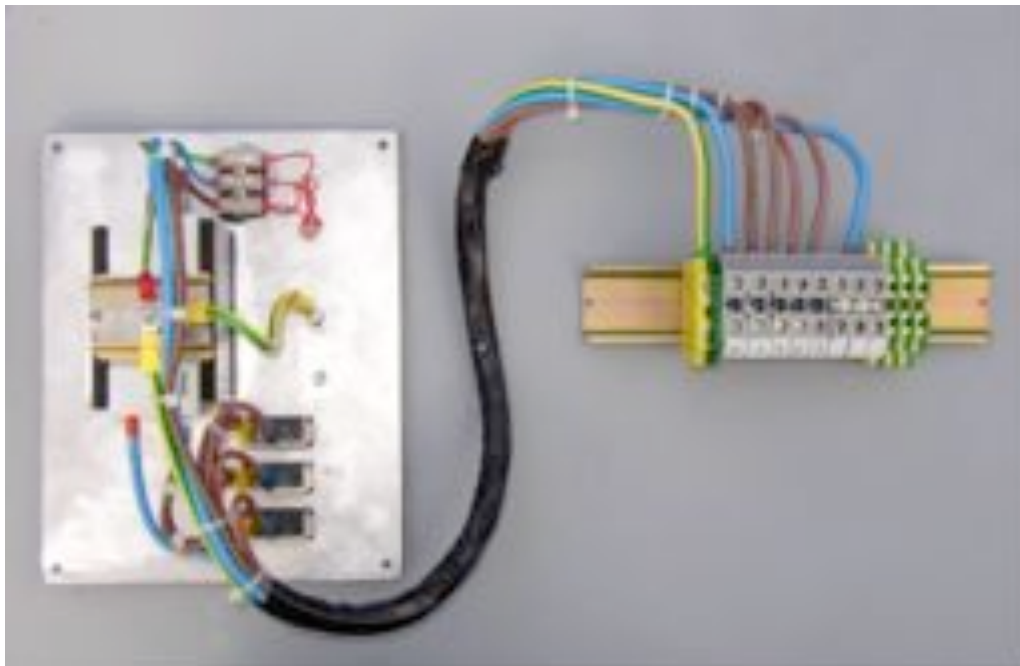
Installation

The unit is ready to go with all panel wiring and necessary panel earths connected. Just mount the panel and connector block assembly and connect as shown below.

It is suggested that the enclosed warning label be affixed adjacent to the panel especially if the boat is to be sold to or used by a third party.

REMEMBER

If the DIN rail is screwed to the boat metalwork this will earth the boat directly to the mains earth when connected to the shore power. If a galvanic isolator is to be fitted this should be fitted as instructed by the manufacturer



- Mains Input
- Load 1 Live
- Load 2 Live
- Load 3 Live
- Load Neutrals
- Load Earths

After a correct installation both indicator lights should be lit when shore power is connected.